

Republic of the Philippines
 Department of Education
 Region VII, Central Visayas
TAGBILARAN CITY SCHOOLS DIVISION
 City of Tagbilaran



Website: www.depedtagbilaran.com
 Email Add: dtagbilarancitydivision@yahoo.com

February 26, 2018

Division Memorandum

No. 115 s. 2018

SUBMISSION OF PERTINENT JDVP-TVL DOCUMENTS

To : All Public Secondary School Principal –Senior High School
 Area Consultants
 All Others Concerned

- Attached is RM No. 0125, s. 2018 with the enclosed letter from Usec. Lorna Dig Dino, Ph.D., Undersecretary for Curriculum and Instruction, DepEd-Central Office, through the Bureau of Curriculum, Development, informing the Schools Division Offices on the submission dates of the Joint Delivery Voucher Program- Technical Vocational Livelihood (JDVP-TVL) pertinent documents.
- Kindly refer to the enclosed Memorandum for more details and fill up the template for this report using this format;

List of Learner/Beneficiary	LRN/Control Number	Specialization	NC to be taken (eg: NCI or NCII)	Assessment Center/ Venue and address

- Please take note that this report is very urgent and already due for submission to the Central Office on or before the end of February, 2018 as reflected in the enclosed Memorandum. You may email this report to the CID Unit or dtagbilarancitydivision@yahoo.com.
- Immediate compliance to this Memorandum is directed.


VIRGINIA C. ZAPANTA, Ed.D CESO V
 Schools Division Superintendent



REPUBLIKA NG PILIPINAS
 REPUBLIC OF THE PHILIPPINES
KAGAWARAN NG EDUKASYON
 DEPARTMENT OF EDUCATION
REHIYON VII, GIANG VISAYAS
 REGION VII, CENTRAL VISAYAS
 Sudlon, Lahug, Cebu City



REGIONAL MEMORANDUM
 No. 0125, s. 2018

FEB 19 2018

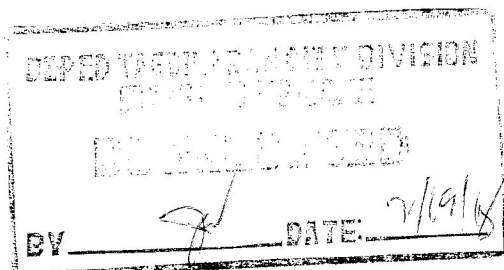
SUBMISSION OF PERTINENT JDVP – TVL DOCUMENTS

To: Schools Division Superintendents

1. Attached is a letter from **Usec. LORNA DEL DINO, Ph. D.**, Undersecretary for Curriculum and Instruction, Department of Education – Central Office (DepEd -CO), through the Bureau of Curriculum Development, informing the Schools Division Offices on the submission dates of the following Joint Delivery Voucher Program – Technical Vocational Education (JDVP -TVL) pertinent documents:

Documents	Due Date
1. Validated List of Learner – Beneficiaries with assigned unique control number per grantee	February 8, 2018 (soft and hard copy)
2. List of JDVP – TVL Partners	
3. List of Enrolled Learner – Beneficiaries with Specializations and National Certification each will take, including the AC Venue	
4. Regional Summary of the JDVP – TVL Payment with the Four (4) original billing statements and the SDO Certification	April 11, 2018 (soft and hard copy)

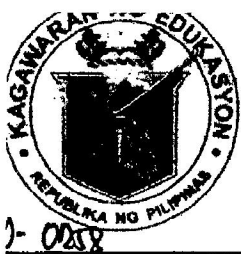
- 4. For more details, refer to the attached communication.
- 3. Immediate dissemination of this Memorandum is desired.



[Signature]
JUNILAN S. SERRANO, Ph.D.
 Director III
 Officer – in – Charge

JAJ/EBE, Jr/rvv
 CLMD/16

Office of the Director (ORDir), Tel. Nos.: (032) 231-1433; 231-1434; 231-1435; 231-1436; 231-1437; 231-1438; 231-1439; 231-1440; 231-1441; 231-1442; 231-1443; 231-1444; 231-1445; 231-1446; 231-1447; 231-1448; 231-1449; 231-1450; 231-1451; 231-1452; 231-1453; 231-1454; 231-1455; 231-1456; 231-1457; 231-1458; 231-1459; 231-1460; 231-1461; 231-1462; 231-1463; 231-1464; 231-1465; 231-1466; 231-1467; 231-1468; 231-1469; 231-1470; 231-1471; 231-1472; 231-1473; 231-1474; 231-1475; 231-1476; 231-1477; 231-1478; 231-1479; 231-1480; 231-1481; 231-1482; 231-1483; 231-1484; 231-1485; 231-1486; 231-1487; 231-1488; 231-1489; 231-1490; 231-1491; 231-1492; 231-1493; 231-1494; 231-1495; 231-1496; 231-1497; 231-1498; 231-1499; 231-1500; 231-1501; 231-1502; 231-1503; 231-1504; 231-1505; 231-1506; 231-1507; 231-1508; 231-1509; 231-1510; 231-1511; 231-1512; 231-1513; 231-1514; 231-1515; 231-1516; 231-1517; 231-1518; 231-1519; 231-1520; 231-1521; 231-1522; 231-1523; 231-1524; 231-1525; 231-1526; 231-1527; 231-1528; 231-1529; 231-1530; 231-1531; 231-1532; 231-1533; 231-1534; 231-1535; 231-1536; 231-1537; 231-1538; 231-1539; 231-1540; 231-1541; 231-1542; 231-1543; 231-1544; 231-1545; 231-1546; 231-1547; 231-1548; 231-1549; 231-1550; 231-1551; 231-1552; 231-1553; 231-1554; 231-1555; 231-1556; 231-1557; 231-1558; 231-1559; 231-1560; 231-1561; 231-1562; 231-1563; 231-1564; 231-1565; 231-1566; 231-1567; 231-1568; 231-1569; 231-1570; 231-1571; 231-1572; 231-1573; 231-1574; 231-1575; 231-1576; 231-1577; 231-1578; 231-1579; 231-1580; 231-1581; 231-1582; 231-1583; 231-1584; 231-1585; 231-1586; 231-1587; 231-1588; 231-1589; 231-1590; 231-1591; 231-1592; 231-1593; 231-1594; 231-1595; 231-1596; 231-1597; 231-1598; 231-1599; 231-1600; 231-1601; 231-1602; 231-1603; 231-1604; 231-1605; 231-1606; 231-1607; 231-1608; 231-1609; 231-1610; 231-1611; 231-1612; 231-1613; 231-1614; 231-1615; 231-1616; 231-1617; 231-1618; 231-1619; 231-1620; 231-1621; 231-1622; 231-1623; 231-1624; 231-1625; 231-1626; 231-1627; 231-1628; 231-1629; 231-1630; 231-1631; 231-1632; 231-1633; 231-1634; 231-1635; 231-1636; 231-1637; 231-1638; 231-1639; 231-1640; 231-1641; 231-1642; 231-1643; 231-1644; 231-1645; 231-1646; 231-1647; 231-1648; 231-1649; 231-1650; 231-1651; 231-1652; 231-1653; 231-1654; 231-1655; 231-1656; 231-1657; 231-1658; 231-1659; 231-1660; 231-1661; 231-1662; 231-1663; 231-1664; 231-1665; 231-1666; 231-1667; 231-1668; 231-1669; 231-1670; 231-1671; 231-1672; 231-1673; 231-1674; 231-1675; 231-1676; 231-1677; 231-1678; 231-1679; 231-1680; 231-1681; 231-1682; 231-1683; 231-1684; 231-1685; 231-1686; 231-1687; 231-1688; 231-1689; 231-1690; 231-1691; 231-1692; 231-1693; 231-1694; 231-1695; 231-1696; 231-1697; 231-1698; 231-1699; 231-1700; 231-1701; 231-1702; 231-1703; 231-1704; 231-1705; 231-1706; 231-1707; 231-1708; 231-1709; 231-1710; 231-1711; 231-1712; 231-1713; 231-1714; 231-1715; 231-1716; 231-1717; 231-1718; 231-1719; 231-1720; 231-1721; 231-1722; 231-1723; 231-1724; 231-1725; 231-1726; 231-1727; 231-1728; 231-1729; 231-1730; 231-1731; 231-1732; 231-1733; 231-1734; 231-1735; 231-1736; 231-1737; 231-1738; 231-1739; 231-1740; 231-1741; 231-1742; 231-1743; 231-1744; 231-1745; 231-1746; 231-1747; 231-1748; 231-1749; 231-1750; 231-1751; 231-1752; 231-1753; 231-1754; 231-1755; 231-1756; 231-1757; 231-1758; 231-1759; 231-1760; 231-1761; 231-1762; 231-1763; 231-1764; 231-1765; 231-1766; 231-1767; 231-1768; 231-1769; 231-1770; 231-1771; 231-1772; 231-1773; 231-1774; 231-1775; 231-1776; 231-1777; 231-1778; 231-1779; 231-1780; 231-1781; 231-1782; 231-1783; 231-1784; 231-1785; 231-1786; 231-1787; 231-1788; 231-1789; 231-1790; 231-1791; 231-1792; 231-1793; 231-1794; 231-1795; 231-1796; 231-1797; 231-1798; 231-1799; 231-1800; 231-1801; 231-1802; 231-1803; 231-1804; 231-1805; 231-1806; 231-1807; 231-1808; 231-1809; 231-1810; 231-1811; 231-1812; 231-1813; 231-1814; 231-1815; 231-1816; 231-1817; 231-1818; 231-1819; 231-1820; 231-1821; 231-1822; 231-1823; 231-1824; 231-1825; 231-1826; 231-1827; 231-1828; 231-1829; 231-1830; 231-1831; 231-1832; 231-1833; 231-1834; 231-1835; 231-1836; 231-1837; 231-1838; 231-1839; 231-1840; 231-1841; 231-1842; 231-1843; 231-1844; 231-1845; 231-1846; 231-1847; 231-1848; 231-1849; 231-1850; 231-1851; 231-1852; 231-1853; 231-1854; 231-1855; 231-1856; 231-1857; 231-1858; 231-1859; 231-1860; 231-1861; 231-1862; 231-1863; 231-1864; 231-1865; 231-1866; 231-1867; 231-1868; 231-1869; 231-1870; 231-1871; 231-1872; 231-1873; 231-1874; 231-1875; 231-1876; 231-1877; 231-1878; 231-1879; 231-1880; 231-1881; 231-1882; 231-1883; 231-1884; 231-1885; 231-1886; 231-1887; 231-1888; 231-1889; 231-1890; 231-1891; 231-1892; 231-1893; 231-1894; 231-1895; 231-1896; 231-1897; 231-1898; 231-1899; 231-1900; 231-1901; 231-1902; 231-1903; 231-1904; 231-1905; 231-1906; 231-1907; 231-1908; 231-1909; 231-1910; 231-1911; 231-1912; 231-1913; 231-1914; 231-1915; 231-1916; 231-1917; 231-1918; 231-1919; 231-1920; 231-1921; 231-1922; 231-1923; 231-1924; 231-1925; 231-1926; 231-1927; 231-1928; 231-1929; 231-1930; 231-1931; 231-1932; 231-1933; 231-1934; 231-1935; 231-1936; 231-1937; 231-1938; 231-1939; 231-1940; 231-1941; 231-1942; 231-1943; 231-1944; 231-1945; 231-1946; 231-1947; 231-1948; 231-1949; 231-1950; 231-1951; 231-1952; 231-1953; 231-1954; 231-1955; 231-1956; 231-1957; 231-1958; 231-1959; 231-1960; 231-1961; 231-1962; 231-1963; 231-1964; 231-1965; 231-1966; 231-1967; 231-1968; 231-1969; 231-1970; 231-1971; 231-1972; 231-1973; 231-1974; 231-1975; 231-1976; 231-1977; 231-1978; 231-1979; 231-1980; 231-1981; 231-1982; 231-1983; 231-1984; 231-1985; 231-1986; 231-1987; 231-1988; 231-1989; 231-1990; 231-1991; 231-1992; 231-1993; 231-1994; 231-1995; 231-1996; 231-1997; 231-1998; 231-1999; 231-2000; 231-2001; 231-2002; 231-2003; 231-2004; 231-2005; 231-2006; 231-2007; 231-2008; 231-2009; 231-2010; 231-2011; 231-2012; 231-2013; 231-2014; 231-2015; 231-2016; 231-2017; 231-2018; 231-2019; 231-2020; 231-2021; 231-2022; 231-2023; 231-2024; 231-2025; 231-2026; 231-2027; 231-2028; 231-2029; 231-2030; 231-2031; 231-2032; 231-2033; 231-2034; 231-2035; 231-2036; 231-2037; 231-2038; 231-2039; 231-2040; 231-2041; 231-2042; 231-2043; 231-2044; 231-2045; 231-2046; 231-2047; 231-2048; 231-2049; 231-2050; 231-2051; 231-2052; 231-2053; 231-2054; 231-2055; 231-2056; 231-2057; 231-2058; 231-2059; 231-2060; 231-2061; 231-2062; 231-2063; 231-2064; 231-2065; 231-2066; 231-2067; 231-2068; 231-2069; 231-2070; 231-2071; 231-2072; 231-2073; 231-2074; 231-2075; 231-2076; 231-2077; 231-2078; 231-2079; 231-2080; 231-2081; 231-2082; 231-2083; 231-2084; 231-2085; 231-2086; 231-2087; 231-2088; 231-2089; 231-2090; 231-2091; 231-2092; 231-2093; 231-2094; 231-2095; 231-2096; 231-2097; 231-2098; 231-2099; 231-2100; 231-2101; 231-2102; 231-2103; 231-2104; 231-2105; 231-2106; 231-2107; 231-2108; 231-2109; 231-2110; 231-2111; 231-2112; 231-2113; 231-2114; 231-2115; 231-2116; 231-2117; 231-2118; 231-2119; 231-2120; 231-2121; 231-2122; 231-2123; 231-2124; 231-2125; 231-2126; 231-2127; 231-2128; 231-2129; 231-2130; 231-2131; 231-2132; 231-2133; 231-2134; 231-2135; 231-2136; 231-2137; 231-2138; 231-2139; 231-2140; 231-2141; 231-2142; 231-2143; 231-2144; 231-2145; 231-2146; 231-2147; 231-2148; 231-2149; 231-2150; 231-2151; 231-2152; 231-2153; 231-2154; 231-2155; 231-2156; 231-2157; 231-2158; 231-2159; 231-2160; 231-2161; 231-2162; 231-2163; 231-2164; 231-2165; 231-2166; 231-2167; 231-2168; 231-2169; 231-2170; 231-2171; 231-2172; 231-2173; 231-2174; 231-2175; 231-2176; 231-2177; 231-2178; 231-2179; 231-2180; 231-2181; 231-2182; 231-2183; 231-2184; 231-2185; 231-2186; 231-2187; 231-2188; 231-2189; 231-2190; 231-2191; 231-2192; 231-2193; 231-2194; 231-2195; 231-2196; 231-2197; 231-2198; 231-2199; 231-2200; 231-2201; 231-2202; 231-2203; 231-2204; 231-2205; 231-2206; 231-2207; 231-2208; 231-2209; 231-2210; 231-2211; 231-2212; 231-2213; 231-2214; 231-2215; 231-2216; 231-2217; 231-2218; 231-2219; 231-2220; 231-2221; 231-2222; 231-2223; 231-2224; 231-2225; 231-2226; 231-2227; 231-2228; 231-2229; 231-2230; 231-2231; 231-2232; 231-2233; 231-2234; 231-2235; 231-2236; 231-2237; 231-2238; 231-2239; 231-2240; 231-2241; 231-2242; 231-2243; 231-2244; 231-2245; 231-2246; 231-2247; 231-2248; 231-2249; 231-2250; 231-2251; 231-2252; 231-2253; 231-2254; 231-2255; 231-2256; 231-2257; 231-2258; 231-2259; 231-2260; 231-2261; 231-2262; 231-2263; 231-2264; 231-2265; 231-2266; 231-2267; 231-2268; 231-2269; 231-2270; 231-2271; 231-2272; 231-2273; 231-2274; 231-2275; 231-2276; 231-2277; 231-2278; 231-2279; 231-2280; 231-2281; 231-2282; 231-2283; 231-2284; 231-2285; 231-2286; 231-2287; 231-2288; 231-2289; 231-2290; 231-2291; 231-2292; 231-2293; 231-2294; 231-2295; 231-2296; 231-2297; 231-2298; 231-2299; 231-2300; 231-2301; 231-2302; 231-2303; 231-2304; 231-2305; 231-2306; 231-2307; 231-2308; 231-2309; 231-2310; 231-2311; 231-2312; 231-2313; 231-2314; 231-2315; 231-2316; 231-2317; 231-2318; 231-2319; 231-2320; 231-2321; 231-2322; 231-2323; 231-2324; 231-2325; 231-2326; 231-2327; 231-2328; 231-2329; 231-2330; 231-2331; 231-2332; 231-2333; 231-2334; 231-2335; 231-2336; 231-2337; 231-2338; 231-2339; 231-2340; 231-2341; 231-2342; 231-2343; 231-2344; 231-2345; 231-2346; 231-2347; 231-2348; 231-2349; 231-2350; 231-2351; 231-2352; 231-2353; 231-2354; 231-2355; 231-2356; 231-2357; 231-2358; 231-2359; 231-2360; 231-2361; 231-2362; 231-2363; 231-2364; 231-2365; 231-2366; 231-2367; 231-2368; 231-2369; 231-2370; 231-2371; 231-2372; 231-2373; 231-2374; 231-2375; 231-2376; 231-2377; 231-2378; 231-2379; 231-2380; 231-2381; 231-2382; 231-2383; 231-2384; 231-2385; 231-2386; 231-2387; 231-2388; 231-2389; 231-2390; 231-2391; 231-2392; 231-2393; 231-2394; 231-2395; 231-2396; 231-2397; 231-2398; 231-2399; 231-2400; 231-2401; 231-2402; 231-2403; 231-2404; 231-2405; 231-2406; 231-2407; 231-2408; 231-2409; 231-2410; 231-2411; 231-2412; 231-2413; 231-2414; 231-2415; 231-2416; 231-2417; 231-2418; 231-2419; 231-2420; 231-2421; 231-2422; 231-2423; 231-2424; 231-2425; 231-2426; 231-2427; 231-2428; 231-2429; 231-2430; 231-2431; 231-2432; 231-2433; 231-2434; 231-2435; 231-2436; 231-2437; 231-2438; 231-2439; 231-2440; 231-2441; 231-2442; 231-2443; 231-2444; 231-2445; 231-2446; 231-2447; 231-2448; 231-2449; 231-2450; 231-2451; 231-2452; 231-2453; 231-2454; 231-2455; 231-2456; 231-2457; 231-2458; 231-2459; 231-2460; 231-2461; 231-2462; 231-2463; 231-2464; 231-2465; 231-2466; 231-2467; 231-2468; 231-2469; 231-2470; 231-2471; 231-2472; 231-2473; 231-2474; 231-2475; 231-2476; 231-2477; 231-2478; 231-2479; 231-2480; 231-2481; 231-2482; 231-2483; 231-2484; 231-2485; 231-2486; 231-2487; 231-2488; 231-2489; 231-2490; 231-2491; 231-2492; 231-2493; 231-2494; 231-2495; 231-2496; 231-2497; 231-2498; 231-2499; 231-2500; 231-2501; 231-2502; 231-2503; 231-2504; 231-2505; 231-2506; 231-2507; 231-2508; 231-2509; 231-2510; 231-2511; 231-2512; 231-2513; 231-2514; 231-2515; 231-2516; 231-2517; 231-2518; 231-2519; 231-2520; 231-2521; 231-2522; 231-2523; 231-2524; 231-2525; 231-2526; 231-2527; 231-2528; 231-2529; 231-2530; 231-2531; 231-2532; 231-2533; 231-2534; 231-2535; 231-2536; 231-2537; 231-2538; 231-2539; 231-2540; 231-2541; 231-2542; 231-2543; 231-2544; 231-2545; 231-2546; 231-2547; 231-2548; 231-2549; 231-2550; 231-2551; 231-2552; 231-2553; 231-2554; 231-2555; 231-2556; 231-2557; 231-2558; 231-2

**Department of Education**

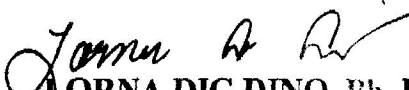
DepEd Complex, Meralco Avenue, Pasig City, Philippines

Direct Line: (632) 633-7202 Telefax: (632) 636-4879

E-mail: lorna.dino@deped.gov.ph Website: www.deped.gov.ph

BCD-0-4515

343908

*Undersecretary for Curriculum and Instruction*DM- CI - 2018-00 033**MEMORANDUM****TO : REGIONAL DIRECTORS****FROM :** 
LORNA DIG DINO, Ph. D
Undersecretary for
Curriculum and Instruction**DATE :** February 2, 2018**SUBJECT : SUBMISSION OF PERTINENT JDVP-TVL DOCUMENTS**

The Department of Education, through the Bureau of Curriculum Development, has recently launched the Joint Delivery Voucher Program for TVL Specializations (JDVP-TVL) for School Year 2017-2018.

In line with this program, this Bureau would like to remind you on the submission dates of the following JDVP-TVL pertinent documents:

Documents	Due Date
1. Validated List of Learner-Beneficiaries with assigned unique control number per grantee	February 8, 2018 (soft and hard copy)
2. List of JDVP-TVL Partners	
3. List of Enrolled Learner-Beneficiaries with the Specializations and National Certification each grantee will take, including the AC Venue	
4. Regional Summary of the JDVP-TVL Payment with the four (4) original billing statements and the SDO Certification	April 11, 2018 (soft and hard copy)

Please submit the hard copy to the Office of **JOCELYN DR ANAYA**, Director IV, Bureau of Curriculum Development, Department of Education, Bonifacio Building (3rd Floor), DepEd Complex, Meralco Avenue, Pasig City. While the soft copy has to be sent through email: bcd.od@deped.gov.ph

In addition, a team from the Central Office-Bureau of Curriculum Development shall monitor the conduct of this program starting February 12, 2018.