



Republic of the Philippines
Department of Education
Region VII, Central Visayas
DIVISION OF CITY SCHOOLS – TAGBILARAN
City of Tagbilaran



August 2, 2017

DIVISION MEMORANDUM

No. 467, 2017

K-12 LEARNING FACILITIES

To: All Education Program Supervisors,
Public Schools District Supervisor,
Public and Private Elementary & Secondary School Principals,
All Others Concerned

1. Attached are copies of articles received by this Office last July 31, 2017 and likewise forwarded to the field not for endorsement but for your updates on K-12 Learning Facilities for the information and guidance of all concerned which is self-explanatory.
2. Please refer to the attached copies for your perusal.
3. Dissemination of this Memorandum is desired.


VIRGINIA C. ZAPANTA, Ed., D., CESO V
Schools Division Superintendent *all*

“Do Your Students (and Teachers) Commit The Same Mistakes In English?”

K-12 is the best educational program of the government because it trains your students how to compete in the global market.

BUT, Are We Ready?

We cannot deny that the Philippines, as you knew (along with Angola and Djibouti), is reportedly one of the three countries in Asia that are stuck in a 10-year basic education.

Maybe you are one of those who strongly believed and agreed that actualizing the K-12 system in the Philippines would result to have more young Filipinos equipped with the necessary knowledge, skills and attitudes to enter the workforce, both locally and globally.

And many are also doubtful, with so many questions on their minds:

1. Are we ready to bring the K-12 vision of progressive and transformative education to reality?
2. Are we ready with classrooms and infrastructure to accept 2 more grade levels?
3. Are we ready with the curriculum to move our education system to the world-class standard we have long been aspiring for?

Dear Education Superintendent,

If you are proud to see your Division in the list of TOP NATIONAL ACHIEVERS, as you empower your teachers and lead the Department of Education in reaching its goal, this might be the most important information that you ever read.

Here's why:

We have just IMPROVED and RELEASED a wonderful product called “Phonetic Speech Laboratory”.



Here is a taste of what you'll discover in this astonishing digital speech laboratory.

- The 7 steps to train even your most hard-tongued students how to easily pronounce words and sentences correctly, with the right intonation and tempo
- How to empower your teachers to diagnose and evaluate your students' pronunciation performance
- The complete step-by-step program to develop your students' pronunciation and comprehension

These are just small samples of what you enjoy when you get the digital and phonetic speech laboratory NOW...

The Thing Of Course Is The Speed At Which Phonetic Speech Laboratory Works. It's Rather Remarkable That You Can Produce Good Speakers In 5 Months Or Less, Even If Your Students Were Not Exposed To The Language In The Lower Years!

GUARANTEED!!!

"Four (4) Powerful Reasons Why You Should Believe What We Say"

Reason One: We're not directly involved in your enrolment and enrolment remarkably increased in Central Philippine University; Holy Name University; St. Scholastica's College; and many other schools, colleges and universities after they installed the Phonetic Speech Laboratory because **students are NOW beginning** to look for a school, that has the right facility to effectively train them and help them become competitively communicative.

Reason Two: "Phonetic Speech Laboratory is really very reliable that's why, after a year, we ordered our second speech laboratory from Bottomline because this makes teaching Speech very easy for us and our students became more perceptive as they enjoyed the lessons presented on video." - **Ms. Yaz Rodriguez, Speech Coordinator, St. Scholastica's College- Manila, Leon Guinto Street, Malate, Manila City - 09179164725**

Reason Three: "Surely what you have done in Tanzania is something remarkable and you have left your own legacy. In case we scale up the project we have your contact we will reach out for you." - Emailed by **Rose Tesha, Program Director, Voluntary Service Overseas, Kahama Road, Dar-es Salaam, Tanzania, East Africa - +255222600072**

Reason Four: "I thought our students could hardly pronounce English words and sentences because our language - Kiswahili - is somewhat difficult or different from other language like Filipino, but we were amazed at how fast our students learned how to produce and articulate English sounds and eventually pronounced words, phrases and sentences with English tempo and intonation. Thanks for the pronunciation program that is included in the package and thank you Bottomline." - **Ludovic Saronga, English Teacher, Vocational Education & Training Authority (VETA), Mikumi, Tanzania, East Africa - +255755067122**

Now, we know that you're probably skeptical. That's normal and healthy. But... don't take our word for it. Listen to some of our clients as you might want to ask them:

- | | |
|---|--|
| • Central Philippine University, Iloilo City | - Prof Thelma Haguisan - 09278996530 |
| • Cebu Institute of Technology, Cebu City | - Engr. Nicarter Teves - 09196230155 |
| • Siquijor State College, Larena, Siquijor | - Mrs. Susan Santos - 09264765575 |
| • Holy Name University, Tagbilaran City | - Mr. Eduardo Alfarero - 09164712637 |
| • St. Scholastica's College-Manila, Manila City | - Ms. Yaz Rodriguez - 09164712637 |
| • Enverga University, Lucena City | - Ms. Jona de la Torre - 09073955306 |
| • Naval Institute of Technology, Naval, Biliran | - Mr. Quirico Diaz - 053009045 |
| • West Negros University, Bacolod City | - Mr. Edgar Moncada - 09152061819 |
| • Saint Joseph Institute of Technology, Butuan City | - Engr. Joel Lobrino - 09998853328 |
| • St. Scholastica's College-Manila, Manila City | - Ms. Jona Lim - 025247686 |
| • VETA Lindi, Tanzania, East Africa | - Mr. Ismael Garcia III - 0758808743 |
| • VETA Mtwara, Tanzania, East Africa | - Mr. Mawaso Mataje - +255752382240 |
| • Asian Institute of Maritime Studies, Pasay City | - Prof. Alma Theresa Corpuz - 09393717800 |
| • Saint Columban College, Pagadian City | - Rev. Fr. Belstar O. Ediang - 09997564582 |
| • Universidad de Zamboanga, Zamboanga City | - Mr. Brian Dominic Yu - 09176306107 |
| • Naga College Foundation, Naga City | - Mrs. Marilou Lelis - 09175683980 |
| • University of the Visayas, Cebu City | - Dean Anna Lou Cabuenas - 0322531338 |
| • Don Jose Ecleo Memorial College, Dinagat Island | - Dr. Pacita T. Orbita - 09193907506 |
| • VETA Mikumi, Tanzania, East Africa | - Mr. Ludovic Saronga - +255755067122 |

Now, think about it: If you absolutely don't need our Phonetic Speech Laboratory. You can try the low-surplus-priced speech laboratory offered by other companies, **WITHOUT** the necessary teachers' tools

Or...

You can use a system that is specifically designed for non-native speakers of English or for hard-tongued students. It's **100% GUARANTEED** and it's been proven to be wildly effective!

Our system reveals how you can train your students how to easily pronounce words and sentences correctly, with the right intonation and tempo, in **5 months or less**, even if your students were not exposed to the language in their lower years.

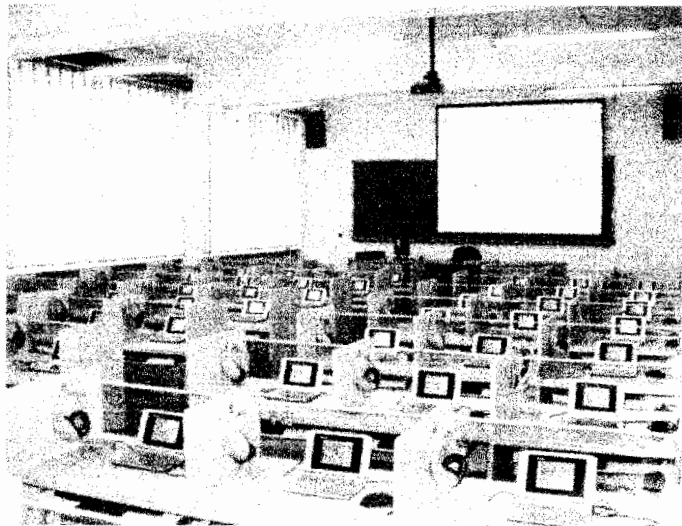
It's amazing. It's unequalled. **It works.**

Here's a sneak peek of what you'll get:

Teacher's digital console with dual monitors and pre-loaded with **pedagogical**

lessons in video and audio; with one-on-one, grouping and broadcast functions

- 1 Teacher's headset (headphone with mic)
- 40 student's machine (without monitor for Premium; with monitor for Premium Power)
- 40 students' headsets (headphones with mic)
- 1 flat screen TV set (replacing the projector)
- 2 levels of teacher's **modeling tools**, demonstrating how sounds are produced
- **FREE 5** levels of **phonetic lessons** produced by the world renowned speech trainer who trained international actors and professionals



Warning:

Do not BUY OUR SPEECH LABORATORY unless it meets the following 3 criteria...

There's a lot of confusion surrounding speech laboratory installations. We want to give you 3 criteria or elements you absolutely, positively must know before you invest in any speech laboratory installation.



One: Be sure that it is **truly digital** and not like what other suppliers deliver to their unsuspecting clients. What they actually delivered was analogue speech laboratory. They just add digital video camera or CCTV to make it appear digital, as you can see in the picture taken from one of the schools, but the teacher complained because she needed to have somebody to operate the camera.

Two: Be sure that it has a crisp audible audio and it's easy to use, (unlike in the picture at the left that uses many buttons to push just to interact with your students) and with **teacher's modeling tools** to assist you in the process of articulation.

Three: Be sure that it is pre-loaded with pedagogical lessons duly certified by DeplEd so that your students could easily

learn and your teachers would not have the burden of sourcing out what materials to teach AND you must

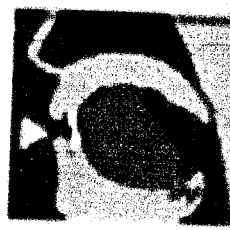
Remember: A speech laboratory without content is like a bible without verses or a guitar without strings.

WAIT: There's still more...

You enjoy additional **30% discount** for **New Installation** when you get it before August 28, 2017, as we celebrate our 30th Anniversary.

"The Reasons Why We GUARANTEE That You Could Really PRODUCE GOOD SPEAKERS In Just 5 Months Or Less..."

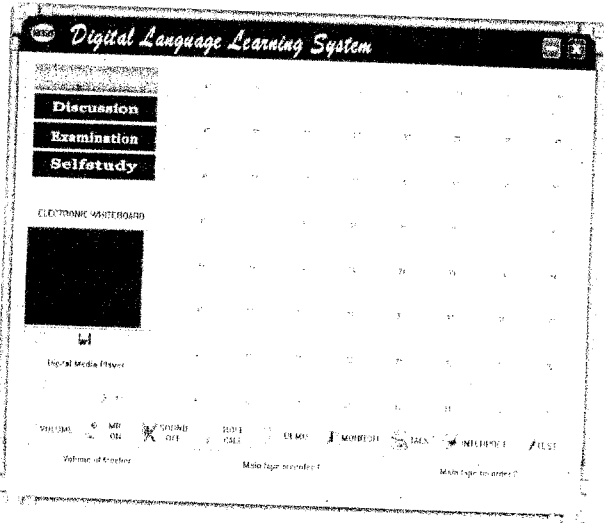
Imagine how wonderful would you feel if you have the modeling tools that would help your teachers demonstrate how to produce and articulate English sounds. This makes your teacher's job a lot easier and more **EXCITING** than before. You don't need to use charts showing how to produce and articulate sounds. You can enjoy more, when you use the **modeling tools** to do it for you, in 3D animation., with instructions that your students could easily follow.



Plus you have the complete database of Phonetic Sounds that you could introduce to your students for them to repeatedly practice articulation until they master how to produce the correct sound. You can be sure that your students could really produce and articulate the correct sound because the system has the tool to show it to your students, with appropriate instruction on where to place the tongue and how lips are formed in **CORRECTLY** producing certain sound that you would chose during your session.

I.P.A. Alphabet for English											
u	ɒ	æ	ʌ	b	ç	d	ð	e	ɛ		
ɪ	ʊ	ə	ɔ	f	g	h	i	ɪ	j		
ʃ	k	l	m	n	ŋ	o	ɔ	p	ɹ		
s	ʃ	t	ʊ	u	ʊ	v	w	z	z		

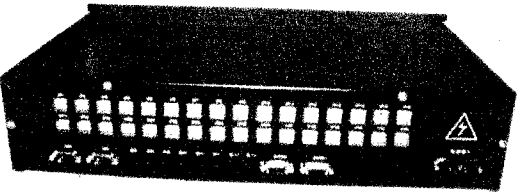
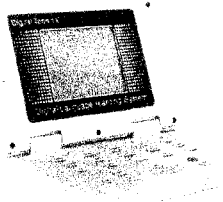
How happy would you feel when you suddenly realize that your speech laboratory is **user-friendly** because it has all the tools you need? The friendly Graphical User Interface (**GUI**) provides you the functions of traditional language laboratory system, such as **All Call, One-to-One, Group Discussion, Broadcast**, etc. The unique Premium Power has digital monitor with **Multi Channel Program** that supports 8 digital channels, with random group broadcasting. You can write lessons or instructions on the **Electronic whiteboard** and send it to your students, through their digital monitor. In **Self-study**, you can allow your students to independently select and play the audio files, text files or test paper in the database. You may also give your students **Paperless Examination** any time you want. Your students can interact with each other with your supervision and control. The excellent **Student Call Display** gives you the chance to quickly respond to your students as they might want to ask or answer questions. The **Option To Connect To The Internet** makes learning and teaching even more **EXCITING** and **REWARDING**.



You might be surprised to know that you could easily develop students' **vocabulary skills and comprehension** when you use the **lessons-on-video** that are arranged, introduced and clearly presented in graduated difficulty and, as you know, stimulating more of your students' senses makes them easily become more perceptive. As you strive for excellence, you can use **more drills and exercises**, presented on video, to enhance your students' pronunciation performance and to easily make them become more expressive and become locally and globally competent in oral communication.



AND you can allow your students to use the digital terminal in their self study. You now can give your students more time to practice and **RECORD** their pronunciation. As you know, learning becomes even more **EXCITING** and **INTERESTING** because the digital terminal gives your students the chance to **INTERACT** with you as teacher. The digital monitor effectively increases your students' interest in learning and reduces your burdensome task in teaching. Your students could listen to the audio lessons, **RECORD** their pronunciation and repeat as many times as they wish until they gain mastery of the lessons. You can even easily give **paperless examination** when you use this gadget.



The Digital Speech Laboratory uses the latest technology using network switch to effectively communicate with the players. Teacher always has the control of everything. The teacher can create database for all students and can conduct roll call, pronunciation drills and exercises; paperless exam. The system adapts to open frame DSP technology and TCP/IP platform so that audio and video signals could be delivered with clarity from the teacher's console to the students' machine installed on each cubicle or to any video component. It has the flexibility of accommodating up to 128 students. It is capable of functioning different modes, like demo or broadcast mode, one-to-one mode and group mode.

It is capable of functioning different modes, like demo or broadcast mode, one-to-one mode and group mode.

WAIT... There's more...



To give you more of what you really need to train your students and make your students become fluent and communicative in English, we include in the package the VIDEO PRONUNCIATION LESSONS, which has been evaluated by some teachers and a Regional Director of DepEd.

The pre-loaded video series is designed to train first-graders and full-professors, enabling readers to excel, and training speakers like professional actors. The five DVD video series and the book were published in 1996 and are now in use in 57 different countries. Colleges and universities worldwide have recognized the need this training serves in enabling speakers of English to reach their full potential.

Besides serving EFL and ESL needs, the series is used widely in learn-to-read programs, for K-12 and CALL CENTER TRAINING. Because of this powerful package 5 colleges got it in 2015 and 6 in 2016.

Contents of Video Series

1. Tonal Action

Tonality is Anchored in Feeling Vibration on the Gum ridge

The vowels E, A, and Y become your Tonal Anchors. The entire phonic system here is based on "feeling", not "ear training". (Deaf people learn speech this way.) Breathing and Relaxation

Vowels: Y (Initial/Final Position)

Long E

Long A

2. Structural Action

Major Vowels: AH / OO / O / AW / OH / OW / A / Y-OI / Y-I / R-Vowel

3. Neutral Vowels

oo / ih / ch / uh

Neutral & Parent Vowels

Minimal Pairs

Neutral Sentences

Neutral Diphthongs

4. Consonant Action

N / M / V / F / Z / S

B / B-V / P / D / T

T as D / G / K

PT / KT / GD / BD

5. More Consonant Action

Contents of Tape 5:

TH / TH / SH / ZH

NG / NK / NG

L / W / Y / R / H

DG / CH / DZ / TS

DL / TL

6. Connected Speech

Linking and Phrasing

Weak Forms

Contractions

Dialogues Practicing

Word Endings and

Contractions

7. Intonation & Rhythms

Rhythm Patterns and Consonant Clusters

bl, pl, br, pr/tr, dr, tw/gl, gr, kl, kr, kw/fl, fr

shr, str/spl, spr/skr, skw/bd, pt, bz, ps/dz, ts

dgd, cht/nd, nt/nz, ns/nge, nch/ng, dg, ncht

vd, vz/zd, st

I certainly don't know what you think about how powerful this program is; that it helped Bernardo Basmayor recover from his impaired speech because of the STROKE he suffered last 2014 while in Tanzania, East Africa installing 2 speech laboratories in 2 VETA (Vocational Education and Training Authority) centers. Although he has not totally recovered from his impaired speech, it is very significant that he NOW could talk at length with better pronunciation because he used this program in practicing his pronunciation. Unlike before that he could hardly talk because of his hardened speech muscles.

You will meet him during the orientation.

Distinctive Benefits and Advantages of the Digital Bottomline Phonetic Speech Laboratory

ACOUSTICS: The Speech lab provides all students, no matter where they are seated in the room, equal opportunity to hear you, their instructor, and to be heard by the instructor. Each student can listen to the lesson material at a level set by themselves for their own comfort. None of the lesson material is misheard due to the direct nature of the sound transmission heard by each student via his or her individual headset.

PRIVACY: I wonder if you have realized yet how easy it would be to provide students with a psychological privacy that promotes their speaking ability. The headset/microphone reduces the inhibitions felt in normal classroom situations and encourages the shy student to speak. The instructor can speak to a single or group of students in privacy without disturbing the rest of the class.

OVERCOMING SHYNESS: Can you imagine your students experiencing high self-esteem when you use the Phonetic Speech Laboratory because this encourages students to talk freely and students will lose their inhibitions when talking in front of their peers. Speech Laboratory systems tend to make students more anonymous.

ATTENTION: As the Phonetic Speech Laboratory allows your student to listen to the program stimulus individually, each individual student's attention is focused on the program material being studied, ultimately increasing the attention span of the student and teaching the student to listen and analyze the content of the lesson.

INDIVIDUALIZATION: And you might have already understood that the Phonetic Speech Laboratory provides you the capability for dividing the class into several groups. These groups can be listening to the same programs on varying subject matter and at different levels of interactivity.

DEVELOPING LISTENING SKILLS: Maybe you will agree that listening skills are an essential element in becoming linguistically fluent. The Phonetic Speech Laboratory helps your students develop good listening skills and aids the process of communication. Your students hear the correct language patterns all the time, **from model speakers**, through their headsets, instead of mimicking other students who may be pronouncing incorrectly.

SELF-PACING: How wonderful would you feel when you know that your students may work through the lesson material at a pace suited to their ability? Your students may feel that the Phonetic Speech Laboratory is their personal tutor.

NATIVE SPEAKER/DIFFERENT VOICES: Consciously you are thinking of how the Speech Laboratory could provide the students with a variety of model voices rather than just the voice of the teacher (who is often not a native speaker). Bottomline Phonetic Speech Laboratory systems have a **Model Voice** feature allowing a native speaker to demonstrate and be used as a model voice subject for the rest of the class.

EXCITEMENT: How excited would you feel if you know that your students become excited when using Bottomline Phonetic Speech Laboratory systems? Your student's attention is heightened and the boredom of repetitive learning is lifted. Your students will complain if the lab lesson is canceled due to public holidays, etc.

EFFICIENCY: Maybe you become more proud of yourself when you know that the Phonetic Speech Laboratory allows you to monitor individual students (and talk to them) much more efficiently than in a regular classroom. Usually in a regular classroom all other students stop speaking when the teacher communicates with an individual student. In the Phonetic Speech Laboratory they will continue working without interruption. Also, a teacher can interact with many more students since he/she merely presses a mouse key or touches a button in order to be in contact with a student. The Phonetic Speech Laboratory makes most efficient use of time, improving the teacher/student time ratio and allowing the instructor to maximize the use of time in a given lesson. In a single teaching session, individual students can have more opportunity to speak than during an entire semester in an average class of 30 to 40 students.

VARIETY: When you use the Phonetic Speech Laboratory you can provide variety from regular classroom situations. The teacher's role is changed and the students are more active for longer periods of time. The use of visual stimulus coupled with selective audio materials increases the attention span of the students.

IMPROVED DISCIPLINE: The Phonetic Speech Laboratory helps you, the instructor, to improve the discipline of the class by privately conversing with your individual students who are being objectionable. By utilizing a system of seat

IMPROVED DISCIPLINE: The Phonetic Speech Laboratory helps you, the instructor, to improve the discipline of the class by privately conversing with your individual students who are being objectionable. By utilizing a system of seat management, any equipment faults or acts of minor vandalism can be reported by the next student entering the booth. If not reported by the student, they become the target of the investigation when the next student enters the booth. Your students have great difficulty talking to each other when wearing headsets (unless they are in pair or group conference mode).

RECORD/COMPARING: Imagine how your students would feel if they know they have the ability to record their own voices along with the master stimulus. Each student can be working interactively on different segments within the same lesson.

SIMPLIFY RECORD KEEPING: You can easily generate records of attendance, grading and oral responses to true/false or multiple choice taped tests. An automated record keeping process can save much time.

ORAL TESTING: Oral test features allow you to test your students with a question or stimulus and only record the student's answer. You can then play back the recorded answers at a later time for grading, without having to listen to the questions.

TEACHER MONITORING: Since you are not concentrating on producing the next question or drill, you can concentrate more on the students' responses. You have more time to produce materials and oversee class activities due to the automatically, rather than manually, controlled instructor console features.

ROLE PLAYING EXERCISES: Using the random pairing/random grouping feature that Bottomline Phonetic Speech Laboratory incorporates, you can generate a variety of exercises structured around role-playing. Students can be paired or grouped together in small numbers and hold conversational practice with each other. Due to the random selection of student partners the students' interest level is always high in anticipation of who their paired partner is likely to be. You can also allow the students to listen to a stimulus from the console allowing the students to practice with each other while responding to the master stimulus.

BUILDING STUDENT EXPERIENCE: Students will admire you more if they know they can build on their existing experiences and gain further knowledge of digital technology while learning in the Phonetic Speech Laboratory. Practicing with systems, software and new applications enhances exportable skills. The more experience students have with digital technology, the more successful they will be in the "real world".

INTERNET ACCESS: Time and technology are changing so fast and the new generation of multimedia systems allows the students to be connected to the World Wide Web and to be able to access information on a global basis. This allows instantaneous access to information worldwide and communication in the following ways:

- Viewing English and target language web sites.
- Person-to-person communication through email, chat rooms, internet phone, etc.
- Video conferencing with local and foreign classes.
- Direct communication with other students from their country and culture of study.
- Access to foreign literature and museums for research and study.
- Watching live TV broadcasts and listening to foreign radio broadcasts.

“By now you're probably wondering “How Much Does This Cost?”

A speech laboratory like the Analogue Speech Laboratory is less than a Million and the Digital Speech Laboratory costs Php2,000,000.00 or more and NONE of them can build a candle to the Phonetic Speech Laboratory:

Most of our clients got the Phonetic Premium and those who wanted the most high-end system, they got the Phonetic Speech Laboratory Premium Power, while there are those who have just started or were on a budget got the Phonetic Speech Laboratory Light, which they wanted to customize and upgrade later. Maybe you are like most of our clients who wanted to be on top of the line and of course, you want to get the highest of the high-end, Phonetic Premium Power because it is the most modern and most complete among the three models because it has students' machine with monitor and it also has phonetic video lessons for **non-native speakers** of English or for **hard-tongued students**.

You can enjoy 30% Bonus if you get not later than August 28, 2017, as we celebrate our 30th Anniversary.

Your Model To Choose From	Your Regular Price	Your 30% Discount	Your Net Amount
Phonetic Premium© without monitor	Php1,799,979.00	Php 539,993.70	Php1,259,985.30
Phonetic Premium Power©	Php1,997,321.00	Php599,196.30	Php1,398,124.70
Phonetic Light	Php1,379,989.00	Php413,996.70	Php 965,992.30

Your Money Is Protected

As school administrator, you know how critical it is to protect your money AND to make sure that your initial investment is SECURED and PROTECTED, we will replicate what we have done with Cebu Institute of Technology, Naval Institute of Technology, West Negros University, Naga College Foundation and other schools where we contracted a surety company to issue a Surety Bond equivalent to their initial investment or you may chose any Surety Company you like to cover the security and protection of your money. We will pay the premium for you. **Fair, isn't it?**

Another important thing is: Clients fear that when there facility met some troubles, they might NOT be able to find somebody to immediately fix it or there might be NO PARTS AVAILABLE for replacement whenever a component of your facility is in trouble or damaged. You might have also experienced this from your previous suppliers, isn't it?

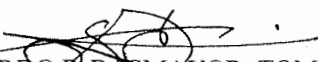
Worry NO MORE!!! Because we really want to serve you, even if our product is built to last a lifetime, when properly used, you can rely that our product is covered with the unprecedented 3-YEAR WARRANTY, which means that you don't have to worry on technical glitches because our expert technical personnel are always available to serve you, for FREE, for three (3) years and during that span of years, we also give you FREE replacement of damaged parts, if any, and if parts are reasonably and justifiably damaged.

Free Training and Free Manual

Aside from this, to ensure that you could have available immediate help whenever you need it, we also train your student assistant or technician on preventive maintenance and provide your student assistant or your technician with the appropriate preventive maintenance manual. **Hands-on training for teachers** is also provided.

We totally transfer the technology so that you will not be calling us whenever you experience even the slightest trouble with your speech laboratory. **We make everything easy for you.**

At your service,


 BERNARDO P. BASMAYOR, TQM
 Senior Speech Laboratory Specialist

P.S. This is no time playing around with untested offers. This is the time to give your students the high-end facility that they deserve. This is the time to get the tested and proven to be wildly effective Phonetic Speech Laboratory.

P.P.S. If you, in honest time with yourself, feel anxious about what your students would feel if you get what you think is best for them; please act decisively because the bonuses, the **30% Bonus** is good only until August 28, 2017, as we celebrate our 30th Anniversary. Don't delay... **CALL OR TEXT 09205394711 NOW** to secure your piece of the bonuses!

P.P.P.S. This product becomes a hot item because of its effectiveness and reliability. Some of those who ordered beyond the date mentioned for the first semester were scheduled for implementation on the second semester. Make your order before August 28, 2017 to really get your desired date of implementation, aside from the **30% Bonus**. Orders beyond August 28, 2017 may be scheduled in the 1st semester of 2018 because we only have enough expert fabricators and we could not just hire fabricators that are not properly trained by us because we want to give you the best workmanship that you deserve.

Do you know of any company that has the dedication to long lasting relationship?



**Interactive Multimedia
 Speech Laboratory
 & Educational Technology**

Your world is the bottomline of your words.

732 Daliao Beach, Toril, Davao City
 Contact Direct: 09205394711

www.facebook.com/BottomlineSpeechLaboratory

email: bottomlinespeechlab@yahoo.com

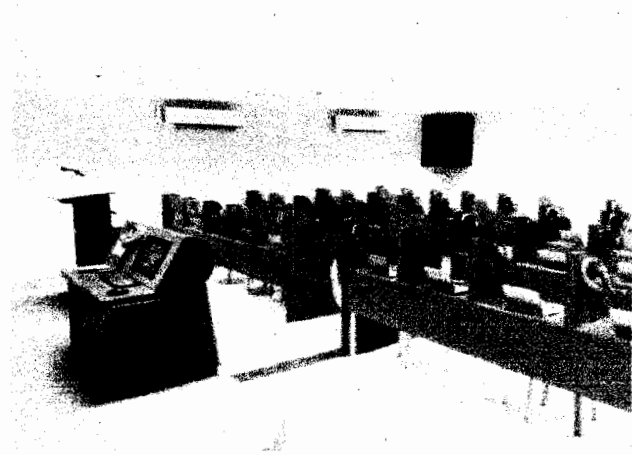
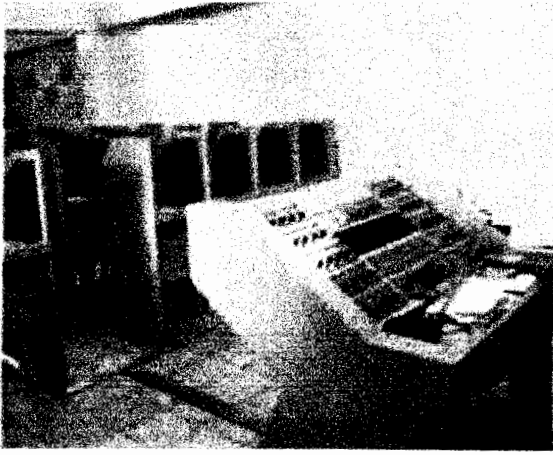
Lucena Marketing Office
 Enverga Boulevard
 University Site, Lucena City
 Contact: Arleen - 09209691933

Cebu Contact:
 79-D Jacosalem Street
 Sto. Niño, Cebu City
 Contact Rose: 09104361682

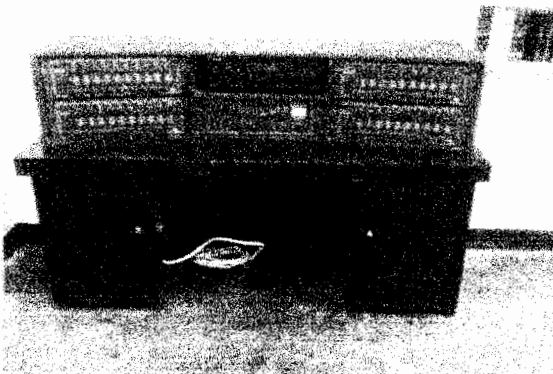
Makati Contact:
 99-A Caimon Street
 San Antonio, Makati City
 Tel. No. 09205394711

Bacolod Contact:
 Contact: Joemar Fernando
 Bago City
 Tel. No. 09983240677

Take a look at the speech laboratories of the past and feel if you are proud or your students would be proud of you, if you still have this kind of speech laboratory. These speech laboratories might be the best when these were purchased but because of the fast changing technology, these are now outmoded and obsolete AND your students don't like it.



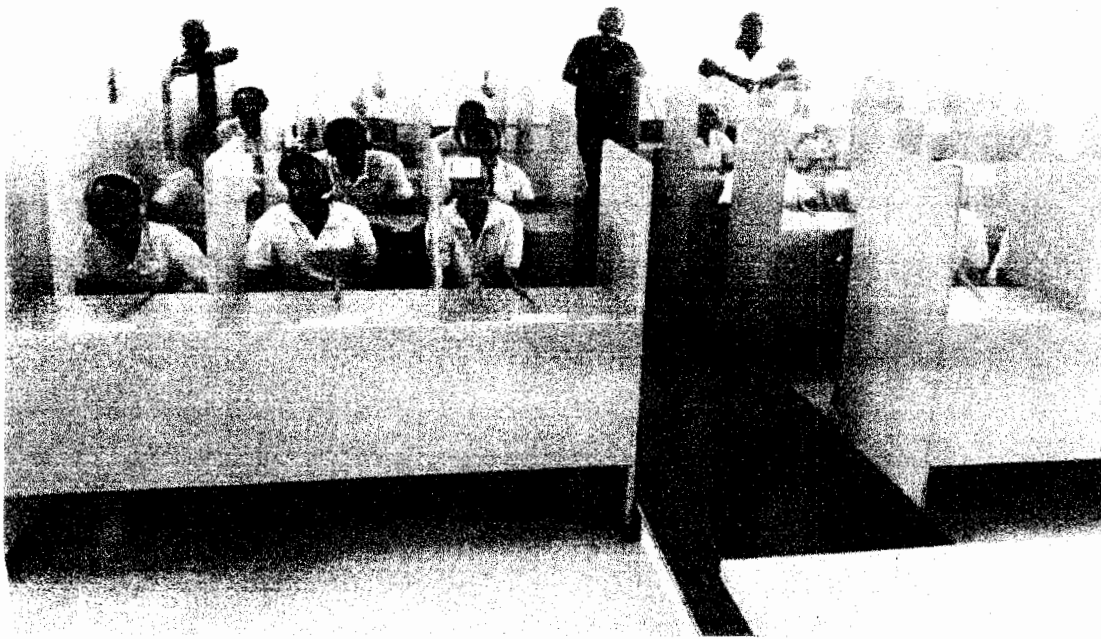
Look **DEEPLY** at the transformation of the similar speech laboratories of Saint Columban College, Pagadian City and the University of the Visayas, Colon, Cebu City, from the old analogue speech laboratory to the **USER-FRIENDLY**, Phonetic Premium Power because they want to be **IN TUNE** with the modern times of **digital technology**.



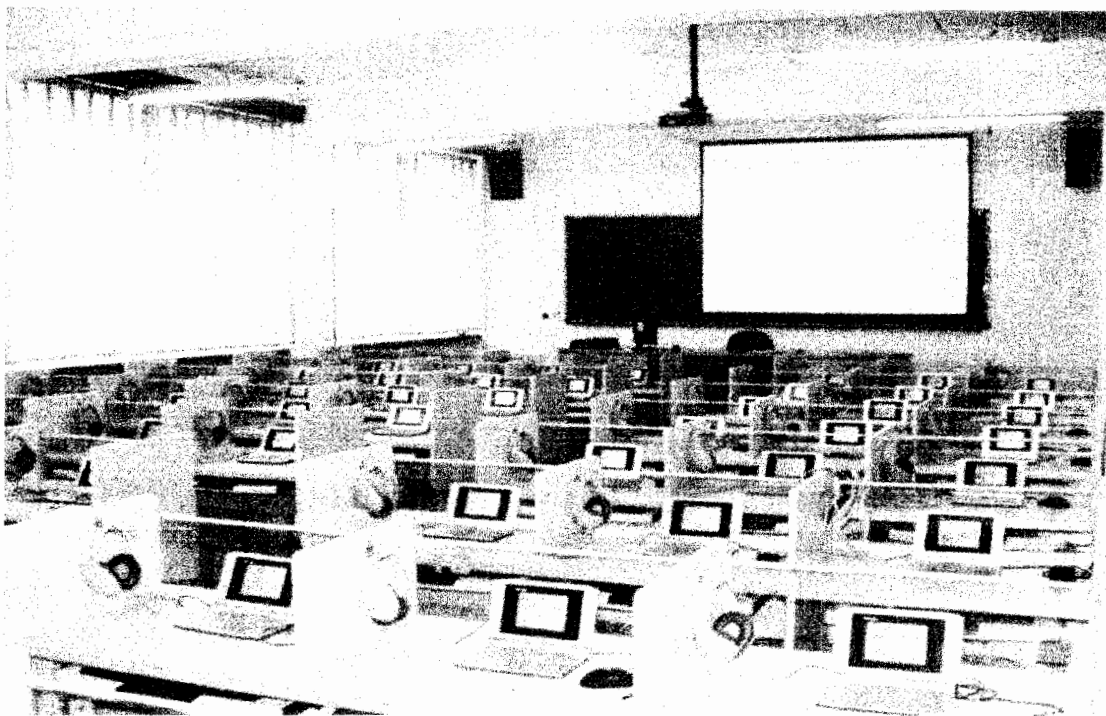
Can you gladly appreciate the action taken by Naga College Foundation of Naga City when they upgraded their outmoded speech laboratory to the most **EXCITING**, **USER-FRIENDLY** and **REVOLUTIONARY** Phonetic Speech Laboratory Premium Power, because it is **FULLY LOADED** with audio and video lessons, **DULY CERTIFIED** by DepEd?



How do you feel when your students, parents, teachers and evaluators admire you **MORE** for doing something worthwhile as you **UPGRADE** your outmoded speech laboratory, like what the Universidad de Zamboanga of Zamboanga City did? They traded up their outmoded speech laboratory, installed by Wicom, with the most modern Phonetic Premium Power because it has **FREE** video lessons for their **K-12** and **CALL CENTER TRAINING**.



This is the Phonetic Speech Laboratory Premium. Administrators like this because it is digital and lower in price. This is the same kind of speech laboratory that Bottomline installed in Tanzania, East Africa. Two units were installed in Tanzania in 2014 and one in 2017, namely: VETA Mtwara, VETA Lindi and VETA Mikumi. The Asian Institute of Maritime Studies (AIMS) got this last August 2014 and installed it in their new building at Roxas Boulevard, Pasay City.



This is the Phonetic Premium Power. This becomes a hot item because it is easy to use and it comes with student's monitors, which they could use to interact with the teacher and to do self-study. Students could also record and save their pronunciation as they continually practice to master the lessons. The first to get this are: Saint Columban College, Universidad de Zamboanga, Naga College Foundation, University of the Visayas, Don Jose Ecleo Memorial Foundation College and St. Mary's Academy of Hagonoy. They said they prefer to own it because it is complete with audio and video lessons that they could conveniently use for the **K-12 Education** and **CALL CENTER TRAINING**, aside from ESL and EFL.